

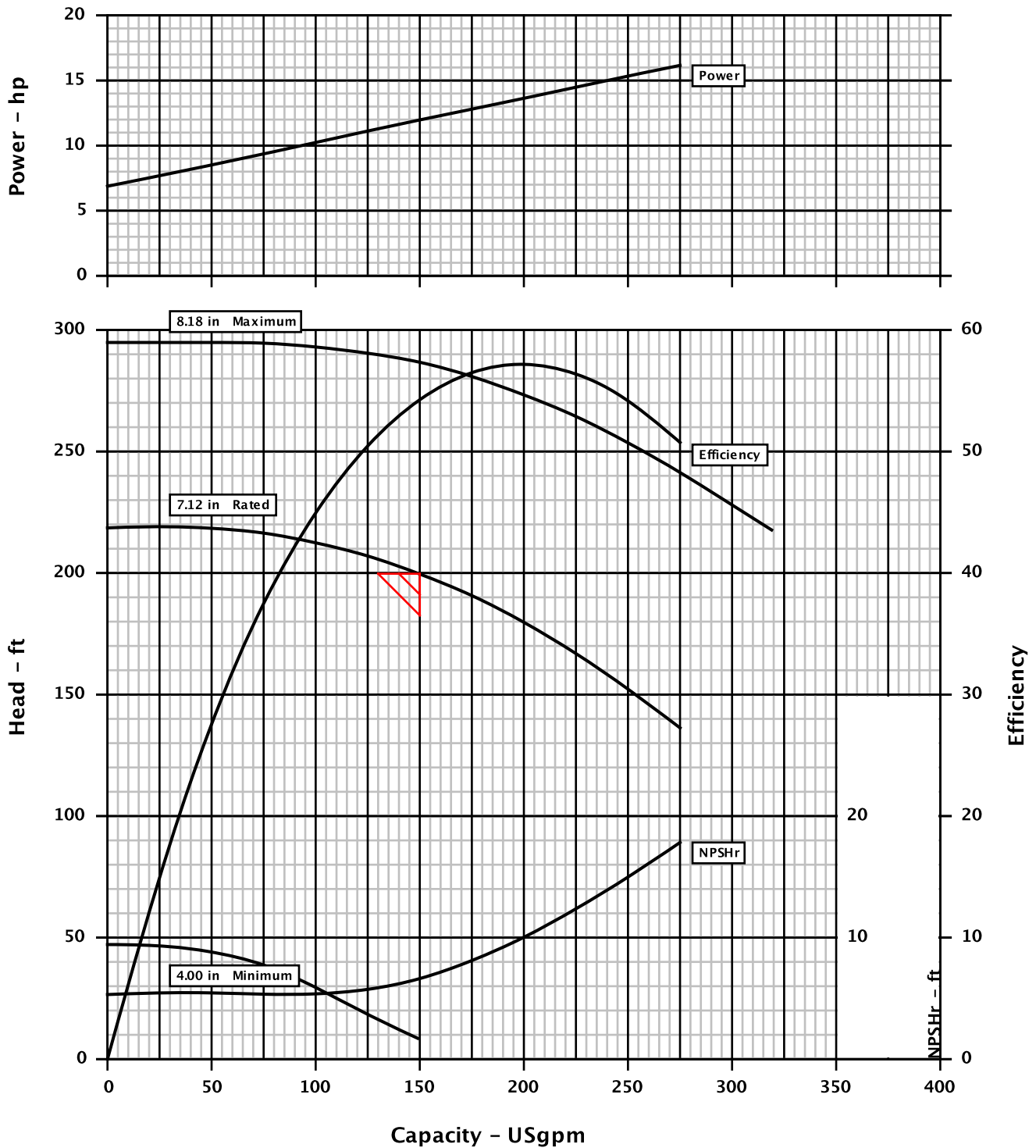


Pump size & type : 1K3x1.5-82RV M3 ST
Based on curve no. : MIII7140V
Number of stages : 1

Customer : Chemetron Railway Pr...
Item number :
Service :
Vendor reference : 59609 Version 1
Date : July 19, 2011

Capacity : 150.0 USgpm
Head : 200.00 ft
Specific gravity : 0.864
Pump speed : 3500 rpm

CURVES ARE APPROXIMATE. PUMP IS GUARANTEED FOR ONE SET OF CONDITIONS, CAPACITY, HEAD, AND EFFICIENCY.
MCSF PROVIDES MECHANICAL PROTECTION ONLY. MINIMUM THERMAL FLOW MUST BE CALCULATED FOR THE SPECIFIC FLUID AND OPERATING CONDITIONS.



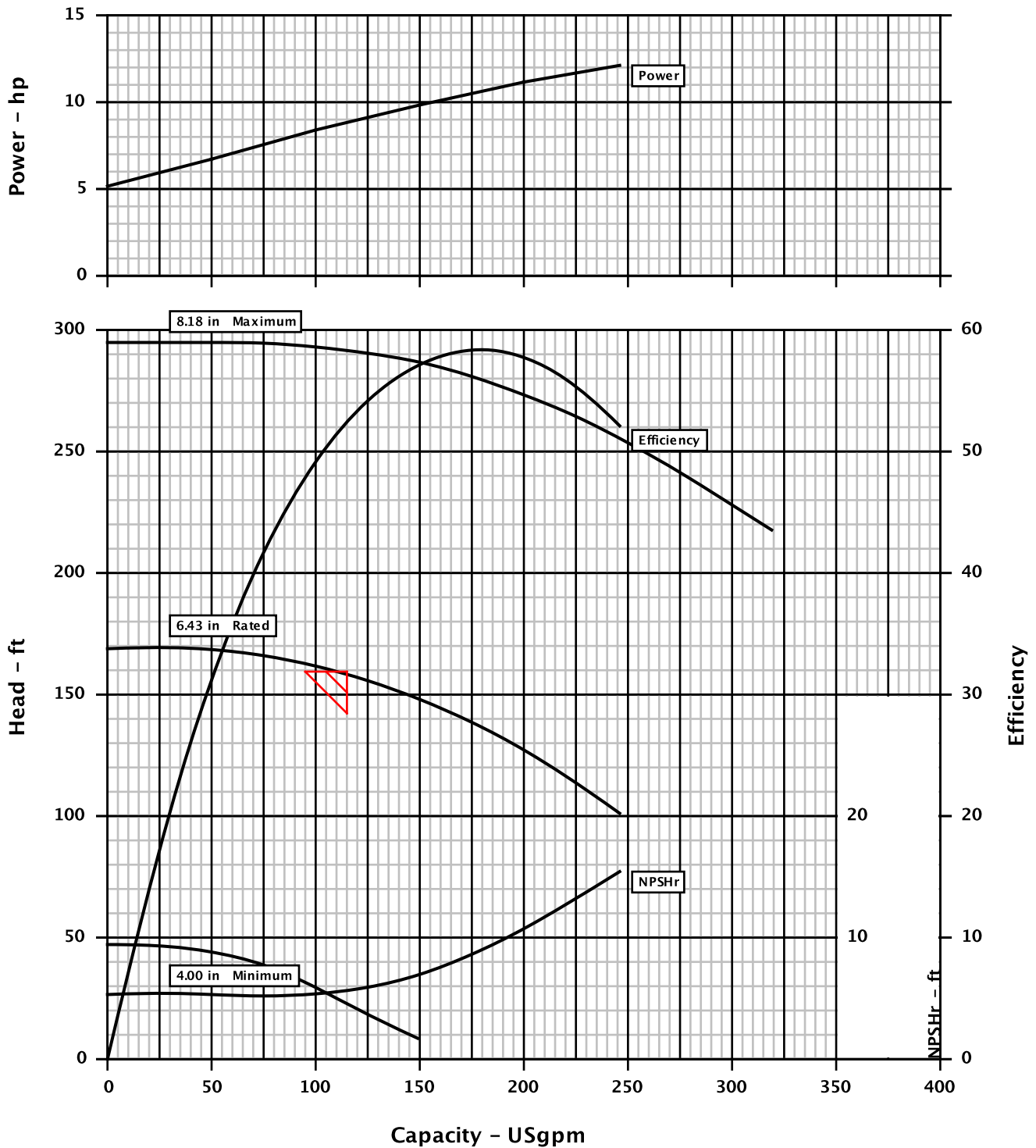


Pump size & type : 1K3x1.5-82RV M3 ST
Based on curve no. : MIII7140V
Number of stages : 1

Customer : Chemetron Railway Pr...
Item number :
Service :
Vendor reference : 59609 Version 1
Date : July 19, 2011

Capacity : 115.0 USgpm
Head : 159.00 ft
Specific gravity : 1.006
Pump speed : 3500 rpm

CURVES ARE APPROXIMATE. PUMP IS GUARANTEED FOR ONE SET OF CONDITIONS, CAPACITY, HEAD, AND EFFICIENCY.
MCSF PROVIDES MECHANICAL PROTECTION ONLY. MINIMUM THERMAL FLOW MUST BE CALCULATED FOR THE SPECIFIC FLUID AND OPERATING CONDITIONS.



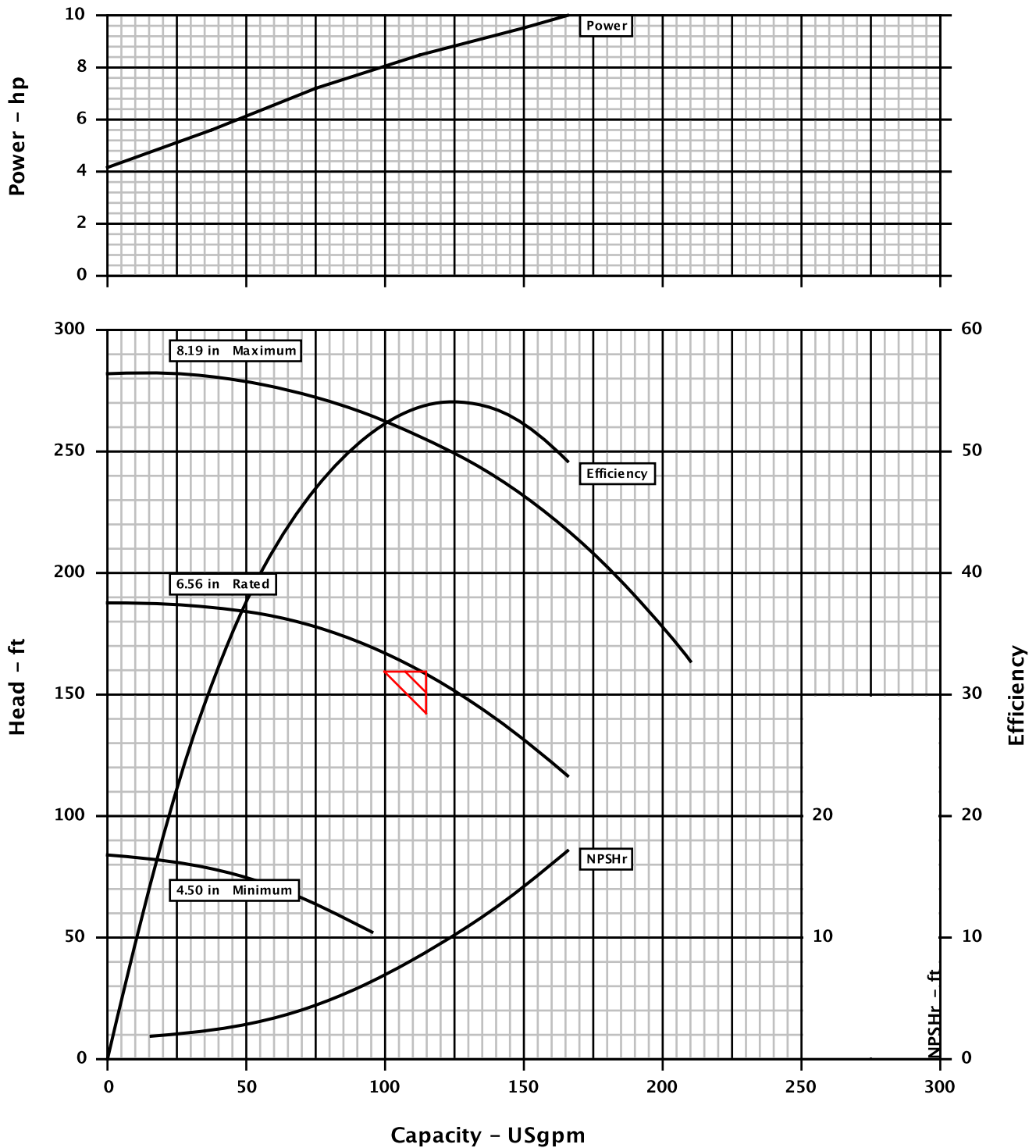


Pump size & type : 1K1.5x1-82RV M3 ST
Based on curve no. : MIII7040AV
Number of stages : 1

Customer : Chemetron Railway Pr...
Item number :
Service :
Vendor reference : 59609 Version 1
Date : July 19, 2011

Capacity : 115.0 USgpm
Head : 159.00 ft
Specific gravity : 1.006
Pump speed : 3500 rpm

CURVES ARE APPROXIMATE. PUMP IS GUARANTEED FOR ONE SET OF CONDITIONS, CAPACITY, HEAD, AND EFFICIENCY.
MCSF PROVIDES MECHANICAL PROTECTION ONLY. MINIMUM THERMAL FLOW MUST BE CALCULATED FOR THE SPECIFIC FLUID AND OPERATING CONDITIONS.

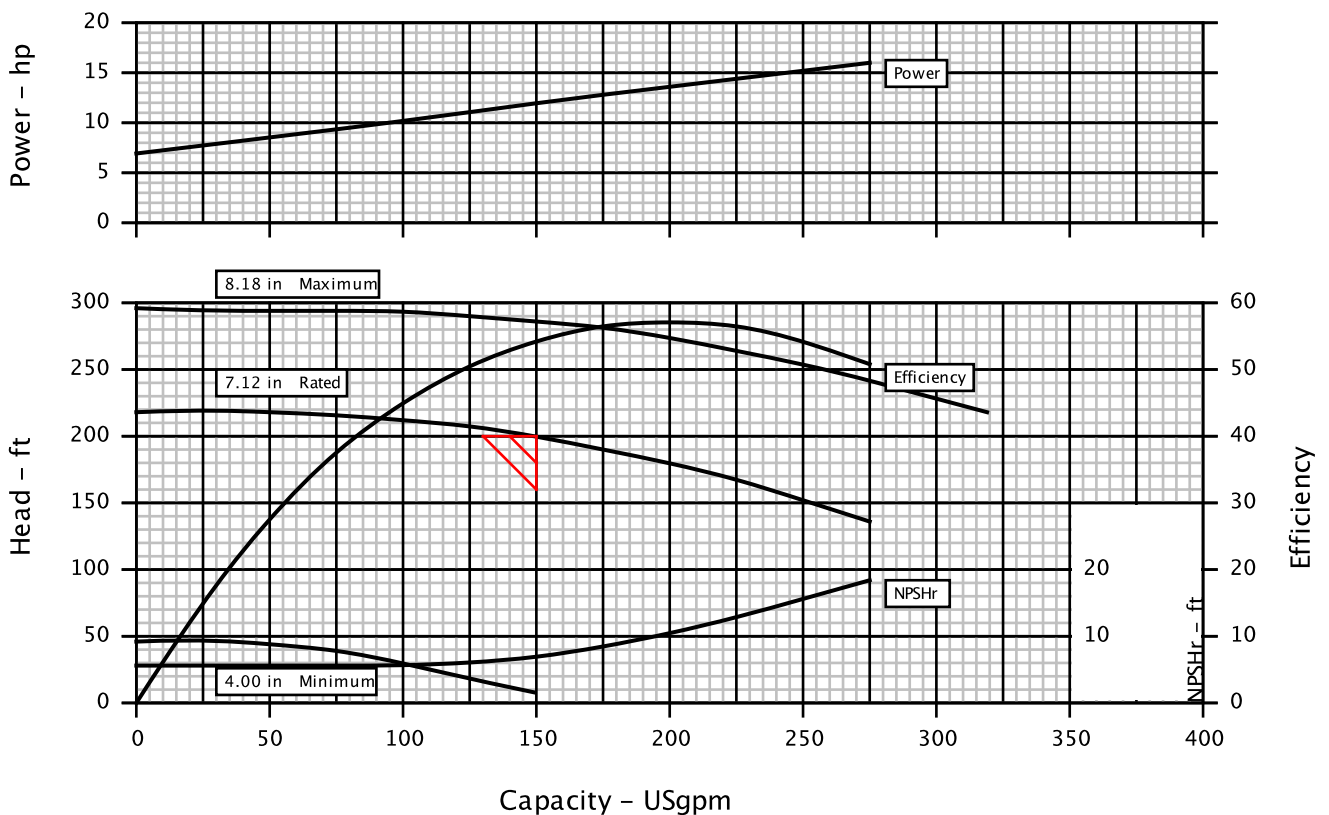


Customer	: Chemetron Railway Prodcuts	Pump / Stages	: 1K3x1.5-82RV M3 ST / 1
Customer reference	:	Based on curve no.	: MIII7140V
Item number	:	Vendor reference	: 59609 Version 1
Service	:	Date	: July 19, 2011

Operating Conditions	Materials / Specification
Capacity : 150.0 USgpm	Material column code : D4...
Water capacity (CQ=1.00) : 150.0 USgpm	Pump specification : ANSI B73.1
Normal capacity : -	
Total Developed Head : 200.00 ft	Other Requirements
Water head (CH=1.00) : 200.00 ft	Hydraulic selection : No specification
NPSH available (NPSHa) : Ample	Construction : No specification
NPSHa less NPSH margin : -	Test tolerance : Hydraulic Institute Level A
Maximum suction pressure : 0.0 psig	Driver Sizing : Max Power(MCSF to EOC)with SF
	Performance data based on standard impeller
	Seal configuration : Single Seal
Liquid	
Liquid type : Hydrocarbon	
Temperature / SG : 60 F / 0.864	
Solid Size - Actual / Limit : - / -	
Viscosity / Vapor pressure : 0.5 cSt / -	

Performance
Hydraulic power : 6.55 hp
Pump speed : 3500 rpm
Efficiency (CE=1.00) : 54.6 %
NPSH required (NPSHr) : 6.4 ft
Rated power : 12.0 hp
Maximum power : 16.2 hp
Driver power : 20.0 hp / 14.9 kW
Casing working pressure : 81.8 psig
(based on shut off @ cut dia)
Maximum allowable : 275.0 psig
Hydrostatic test pressure : 413.0 psig
Est. rated seal chamb. press. : -
Impeller diameter
Rated : 7.12 in
Maximum : 8.18 in
Minimum : 4.00 in
Suction specific speed : 7810 US units
Minimum continuous flow : 22.1 USgpm
Maximum head @ rated dia : 218.81 ft
Flow at BEP : 199.5 USgpm
Flow as % of BEP : 75.2 %
Efficiency at normal flow : -
Impeller dia ratio (rated/max) : 87.0 %
Head rise to shut off : 9.4 %
Total head ratio (rated/max) : 69.6 %

CURVES ARE APPROXIMATE. PUMP IS GUARANTEED FOR ONE SET OF CONDITIONS, CAPACITY, HEAD, AND EFFICIENCY.
MCSF PROVIDES MECHANICAL PROTECTION ONLY. MINIMUM THERMAL FLOW MUST BE CALCULATED FOR THE SPECIFIC FLUID AND OPERATING CONDITIONS.

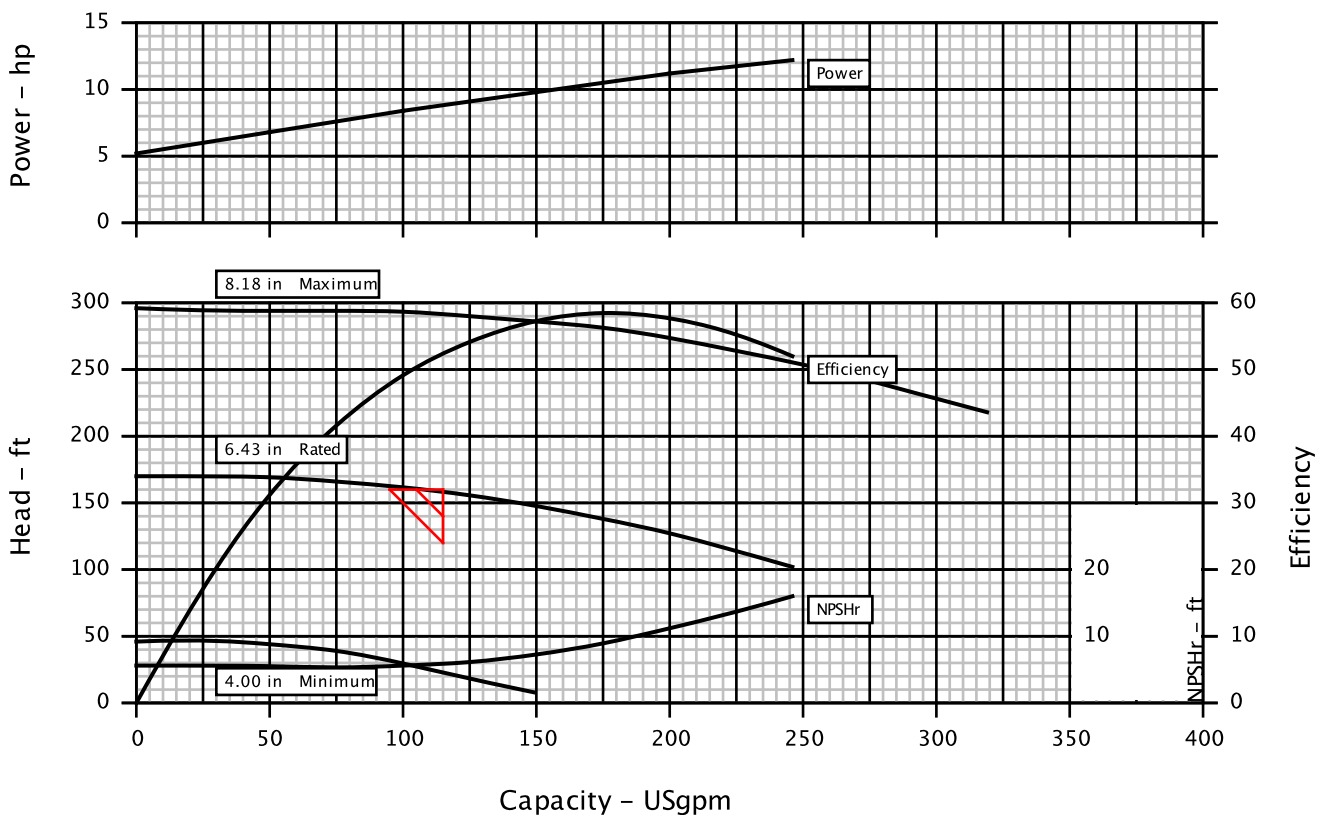


Customer	: Chemetron Railway Prodcuts	Pump / Stages	: 1K3x1.5-82RV M3 ST / 1
Customer reference	:	Based on curve no.	: MIII7140V
Item number	:	Vendor reference	: 59609 Version 1
Service	:	Date	: July 19, 2011

Operating Conditions		Materials / Specification	
Capacity	: 115.0 USgpm	Material column code	: D4...
Water capacity (CQ=1.00)	: 115.0 USgpm	Pump specification	: ANSI B73.1
Normal capacity	: -	Other Requirements Hydraulic selection : No specification Construction : No specification Test tolerance : Hydraulic Institute Level A Driver Sizing : Max Power(MCSF to EOC)with SF Performance data based on standard impeller Seal configuration : Single Seal	
Total Developed Head	: 159.00 ft		
Water head (CH=1.00)	: 159.00 ft		
NPSH available (NPSHa)	: Ample		
NPSHa less NPSH margin	: -		
Maximum suction pressure	: 0.0 psig		
Liquid			
Liquid type	: Other		
Temperature / SG	: 105 F / 1.006		
Solid Size - Actual / Limit	: - / -		
Viscosity / Vapor pressure	: 1.0 cSt / -		

Performance			
Hydraulic power	: 4.65 hp	Impeller diameter	
Pump speed	: 3500 rpm	Rated	: 6.43 in
Efficiency (CE=1.00)	: 52.7 %	Maximum	: 8.18 in
		Minimum	: 4.00 in
NPSH required (NPSHr)	: 5.4 ft	Suction specific speed	: 7810 US units
Rated power	: 8.81 hp	Minimum continuous flow	: 19.9 USgpm
Maximum power	: 12.2 hp	Maximum head @ rated dia	: 169.04 ft
Driver power	: 15.0 hp / 11.2 kW	Flow at BEP	: 179.6 USgpm
Casing working pressure	: 73.6 psig	Flow as % of BEP	: 64.0 %
(based on shut off @ cut dia)		Efficiency at normal flow	: -
Maximum allowable	: 273.0 psig	Impeller dia ratio (rated/max)	: 78.6 %
Hydrostatic test pressure	: 413.0 psig	Head rise to shut off	: 6.3 %
Est. rated seal chamb. press.	: -	Total head ratio (rated/max)	: 54.4 %

CURVES ARE APPROXIMATE. PUMP IS GUARANTEED FOR ONE SET OF CONDITIONS, CAPACITY, HEAD, AND EFFICIENCY.
MCSF PROVIDES MECHANICAL PROTECTION ONLY. MINIMUM THERMAL FLOW MUST BE CALCULATED FOR THE SPECIFIC FLUID AND OPERATING CONDITIONS.

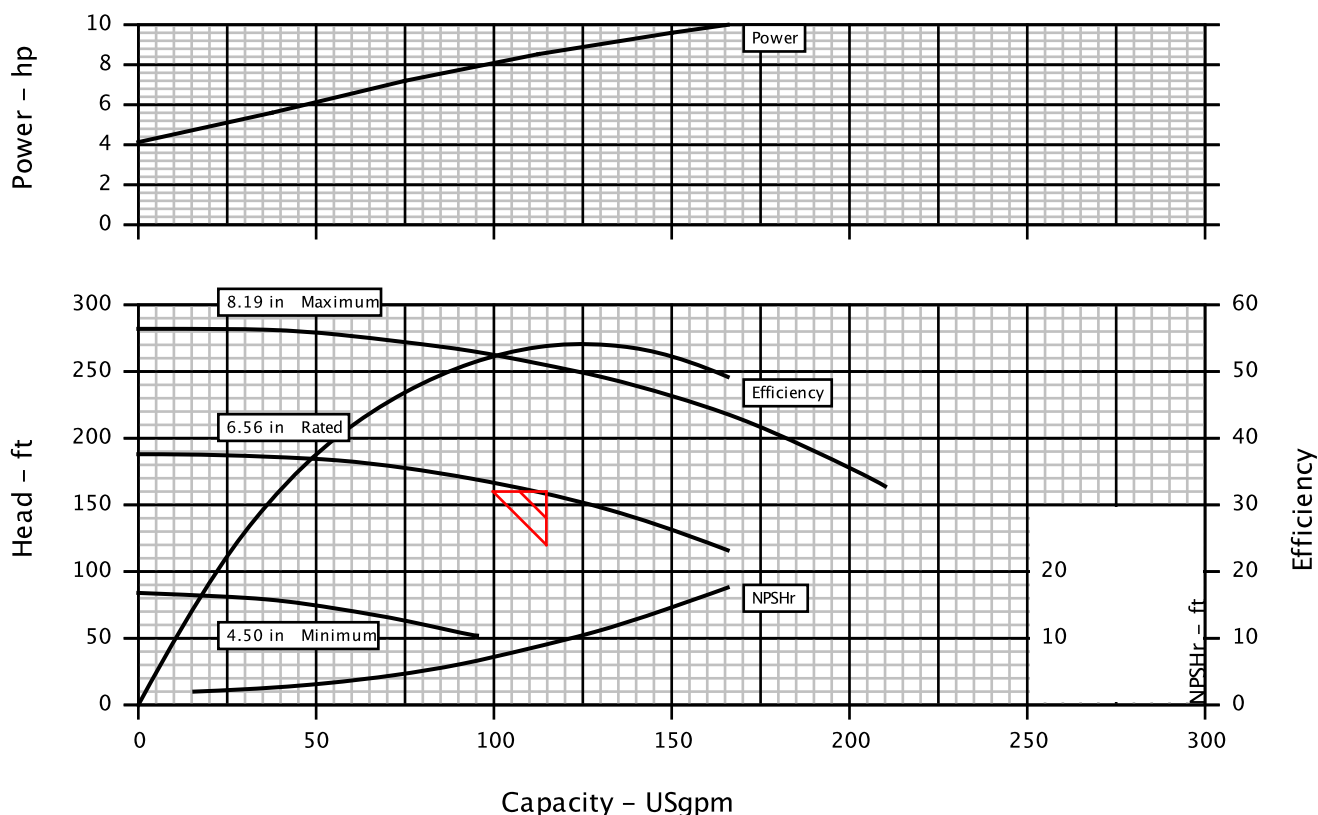


Customer	: Chemetron Railway Prodcuts	Pump / Stages	: 1K1.5x1-82RV M3 ST / 1
Customer reference	:	Based on curve no.	: MIII7040AV
Item number	:	Vendor reference	: 59609 Version 1
Service	:	Date	: July 19, 2011

Operating Conditions	Materials / Specification
Capacity : 115.0 USgpm	Material column code : D4...
Water capacity (CQ=1.00) : 115.0 USgpm	Pump specification : ANSI B73.1
Normal capacity : -	
Total Developed Head : 159.00 ft	Other Requirements
Water head (CH=1.00) : 159.00 ft	Hydraulic selection : No specification
NPSH available (NPSHa) : Ample	Construction : No specification
NPSHa less NPSH margin : -	Test tolerance : Hydraulic Institute Level A
Maximum suction pressure : 0.0 psig	Driver Sizing : Max Power(MCSF to EOC)with SF
	Performance data based on standard impeller
	Seal configuration : Single Seal
Liquid	
Liquid type : Other	
Temperature / SG : 105 F / 1.006	
Solid Size - Actual / Limit : - / -	
Viscosity / Vapor pressure : 1.0 cSt / -	

Performance
Hydraulic power : 4.65 hp
Pump speed : 3500 rpm
Efficiency (CE=1.00) : 54.1 %
NPSH required (NPSHr) : 8.5 ft
Rated power : 8.59 hp
Maximum power : 10.00 hp
Driver power : 10.00 hp / 7.46 kW
Casing working pressure : 81.7 psig
(based on shut off @ cut dia)
Maximum allowable : 273.0 psig
Hydrostatic test pressure : 413.0 psig
Est. rated seal chamb. press. : -
Impeller diameter
Rated : 6.56 in
Maximum : 8.19 in
Minimum : 4.50 in
Suction specific speed : 7660 US units
Minimum continuous flow : 12.7 USgpm
Maximum head @ rated dia : 187.71 ft
Flow at BEP : 127.1 USgpm
Flow as % of BEP : 90.5 %
Efficiency at normal flow : -
Impeller dia ratio (rated/max) : 80.2 %
Head rise to shut off : 18.1 %
Total head ratio (rated/max) : 62.3 %

CURVES ARE APPROXIMATE. PUMP IS GUARANTEED FOR ONE SET OF CONDITIONS, CAPACITY, HEAD, AND EFFICIENCY.
MCSF PROVIDES MECHANICAL PROTECTION ONLY. MINIMUM THERMAL FLOW MUST BE CALCULATED FOR THE SPECIFIC FLUID AND OPERATING CONDITIONS.



Customer	:	Chemetron Railway Prodcuts	Pump / Stages	:	1K3x1.5-82RV M3 ST	/	1
Customer reference	:		Based on curve no.	:	MIII7140V		
Item number	:		Vendor reference	:	59609 Version 1		
Service	:		Date	:	July 19, 2011		
Construction				Driver Information			
Nozzles	Size	Rating	Face	Pos'n	Manufacturer	: By Others	
Suction	3.00	150#	FF	End	Power	: 20.0 hp / 14.9 kW	
Discharge	1.50	150#	FF	Top	Service factor (req'st / act)	: 1.0 / 1.15	
Casing mounting				:	Foot		
Casing split				:	Radial		
Impeller type				:	Reverse Vane		
Bearing type (radial)				:	Sgl Row		
Bearing number (radial)				:	6207-C3		
Bearing type (thrust)				:	Dbl Row		
Bearing number (thrust)				:	5306-AC3		
Bearing lubrication				:	Flood		
Rotation (view from cplg)				:	CW per Hyd.		
Materials							
Casing				:	316SS (D4/CF8M)		
Impeller				:	CD4M/CD-4MCu		
Seal chamber				:	FML Box / (316SS)		
Shaft				:	ZH/316SS ButtWelded		
Sleeve				:	No Sleeve		
Baseplate, Coupling and Guard							
Baseplate type				:	Type A Founda		
Baseplate material				:	Steel		
Baseplate size				:	148 Baseplate		
Coupling manufacturer				:	T.B. Woods		
Coupling size				:	Sureflex SC7		
Coupling / Shaft guard				:	Steel		
Shaft / seal guard				:	None Supplied		
Weights (Approx.)							
Bareshaft pump(nett)				:	124.0 lb		
Baseplate(nett)				:	163.0 lb		
Driver(nett)				:	-		
Shipping gross weight/vol.				:	330.0 lb	/	17706 cu.in
Testing							
Hydrostatic test				:	Non witness		
Performance test				:	None		
NPSH test				:	None		
Paint and Package							
Pump paint				:	Std.Polyurethane		
Base grout surface prep				:	Standard		
Shipment type				:	Domestic		
Notes							
-							
Mark 3A w/Watchdog oiler							
-							
-							
-							
-							

Customer	:	Chemetron Railway Prodcuts	Pump / Stages	:	1K3x1.5-82RV M3 ST	/	1	
Customer reference	:		Based on curve no.	:	MIII7140V			
Item number	:		Vendor reference	:	59609 Version 1			
Service	:		Date	:	July 19, 2011			
Construction				Driver Information				
Nozzles	Size	Rating	Face	Pos'n	Manufacturer	: By Others		
Suction	3.00	150#	FF	End	Power	: 15.0 hp / 11.2 kW		
Discharge	1.50	150#	FF	Top	Service factor (req'st / act)	: 1.0 / 1.15		
Casing mounting				:	Foot	Speed	: 3600	
Casing split				:	Radial	Orientation / Mounting	: Horizontal / Foot	
Impeller type				:	Reverse Vane	Driver Type	: -	
Bearing type (radial)				:	Sgl Row	Frame-size / material	: 254T / CAST IRON	
Bearing number (radial)				:	6207-C3	Enclosure	: -	
Bearing type (thrust)				:	Dbl Row	Hazardous area class	: -	
Bearing number (thrust)				:	5306-AC3	Explosion 'T' rating	: -	
Bearing lubrication				:	Flood	Volts / Phase / Hz	: 190 V / 3 / 60.0	
Rotation (view from cplg)				:	CW per Hyd.	Amps-full load/locked rotor	: - / -	
Materials				Motor starting				: Direct on line (DOL)
Casing				:	316SS (D4/CF8M)	Insulation	: F	
Impeller				:	CD4M/CD-4MCu	Temperature rise	: -	
Seal chamber				:	FML Box / (316SS)	Bearings	: Ball	
Shaft				:	ZH/316SS ButtWelded	Lubrication	: Grease	
Sleeve				:	No Sleeve	Motor mounted by	: Flowserve	
Baseplate, Coupling and Guard				Sound Pressure (dBA @ 1.0 m)				
Baseplate type				:	Type A Founda	Driver, expected	: -	
Baseplate material				:	Steel	Pump & driver, estimated	: N/A	
Baseplate size				:	148 Baseplate	Seal Information		
Coupling manufacturer				:	T.B. Woods	Arrangement	: Sgl Int O-Ring	
Coupling size				:	Sureflex SC7	Size	: 1.375	
Coupling / Shaft guard				:	Steel	Manufactu... / Type	: Flowserve / ISC Pusher	
Shaft / seal guard				:	None Supplied	Material code (Man'f/API)	: CSCPX----ECXV- / BSTFN	
Weights (Approx.)				Internal neck bushing				: Not Available
Bareshaft pump(nett)				:	124.0 lb	Gland		
Baseplate(nett)				:	163.0 lb	Gland material	: 316SS	
Driver(nett)				:	-	Flush	: .375" NPT	
Shipping gross weight/vol.				:	330.0 lb / 17706 cu.in	Vent	: .375" NPT	
Testing				Drain				: .375" NPT
Hydrostatic test				:	Non witness	Auxiliary seal device	: Carbon Bushing	
Performance test				:	None	Piping		
NPSH test				:	None	Seal flush plan	: None	
Paint and Package				Seal flush construction				: -
Pump paint				:	Std.Polyurethane	Seal flush material	: -	
Base grout surface prep				:	Standard	Aux seal flush plan	: None	
Shipment type				:	Domestic	Aux seal flush construction	: -	
				Aux seal flush material				: -
Notes								
-								
Mark 3A w/Watchdog oiler								
-								
-								
-								
-								

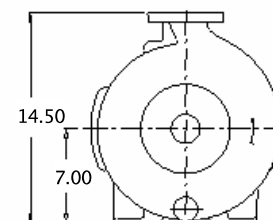
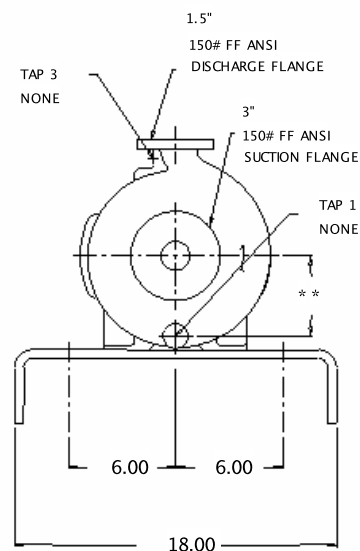
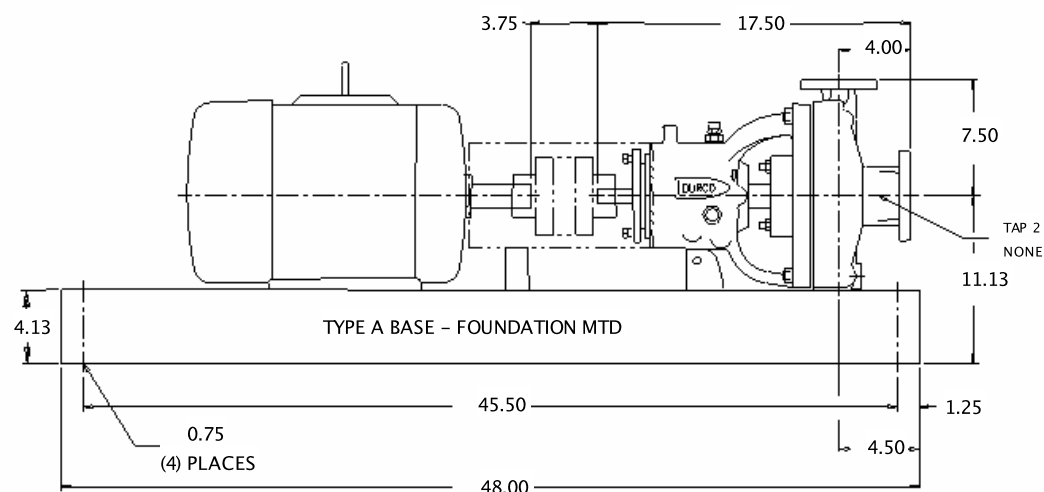
Customer	:	Chemetron Railway Prodcuts	Pump / Stages	:	1K1.5x1-82RV M3 ST	/	1
Customer reference	:		Based on curve no.	:	MIII7040AV		
Item number	:		Vendor reference	:	59609 Version 1		
Service	:		Date	:	July 19, 2011		
Construction				Driver Information			
Nozzles	Size	Rating	Face	Pos'n	Manufacturer	: By Others	
Suction	1.50	150#	FF	End	Power	: 10.00 hp / 7.46 kW	
Discharge	1.00	150#	FF	Top	Service factor (req'st / act)	: 1.0 / 1.15	
Casing mounting				:	Foot		
Casing split				:	Radial		
Impeller type				:	Reverse Vane		
Bearing type (radial)				:	Sgl Row		
Bearing number (radial)				:	6207-C3		
Bearing type (thrust)				:	Dbl Row		
Bearing number (thrust)				:	5306-AC3		
Bearing lubrication				:	Flood		
Rotation (view from cplg)				:	CW per Hyd.		
Materials							
Casing				:	316SS (D4/CF8M)		
Impeller				:	CD4M/CD-4MCu		
Seal chamber				:	FML Box / (316SS)		
Shaft				:	ZH/316SS ButtWelded		
Sleeve				:	No Sleeve		
Baseplate, Coupling and Guard							
Baseplate type				:	Type A Founda		
Baseplate material				:	Steel		
Baseplate size				:	148 Baseplate		
Coupling manufacturer				:	T.B. Woods		
Coupling size				:	Sureflex SC7		
Coupling / Shaft guard				:	Steel		
Shaft / seal guard				:	None Supplied		
Weights (Approx.)							
Bareshaft pump(nett)				:	103.0 lb		
Baseplate(nett)				:	163.0 lb		
Driver(nett)				:	-		
Shipping gross weight/vol.				:	305.9 lb	/	15211 cu.in
Testing							
Hydrostatic test				:	Non witness		
Performance test				:	None		
NPSH test				:	None		
Paint and Package							
Pump paint				:	Std.Polyurethane		
Base grout surface prep				:	Standard		
Shipment type				:	Domestic		
Notes							
-							
Mark 3A w/Watchdog oiler							
-							
-							
-							
-							

Dimensions certified for construction when properly endorsed below.
Refer to factory for any "x" dimensions.
DO NOT SCALE DRAWING

NOTES:

1. Consult pump I.O.M. before installing the pump.
2. Installation dimensions are +/- .13" (3mm), unless otherwise noted.
3. Foundation bolts and piping should not be set rigidly before receipt of equipment.
4. Allow a minimum of .75" (19mm) under baseplate for adjustment and grouting.
5. All holes in flanges are offset from centerlines.

6. Piping, foundations, and systems are the responsibility of others.
Flowserve Pump Division data and comments are offered as an aid, but Flowserve Pump Division cannot assume responsibility for the system design or operation. It is recommended that a specialist skilled in this area be consulted to ensure a successful installation.
7. Dimension shown from bottom of base to centerline of pump includes any blocks under pump, as necessary.



All dimensions are in inches unless otherwise specified

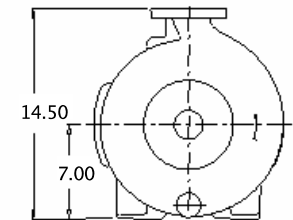
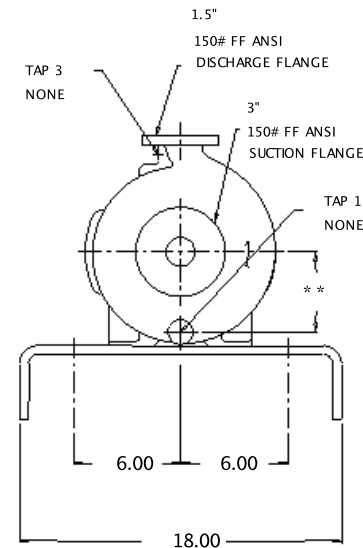
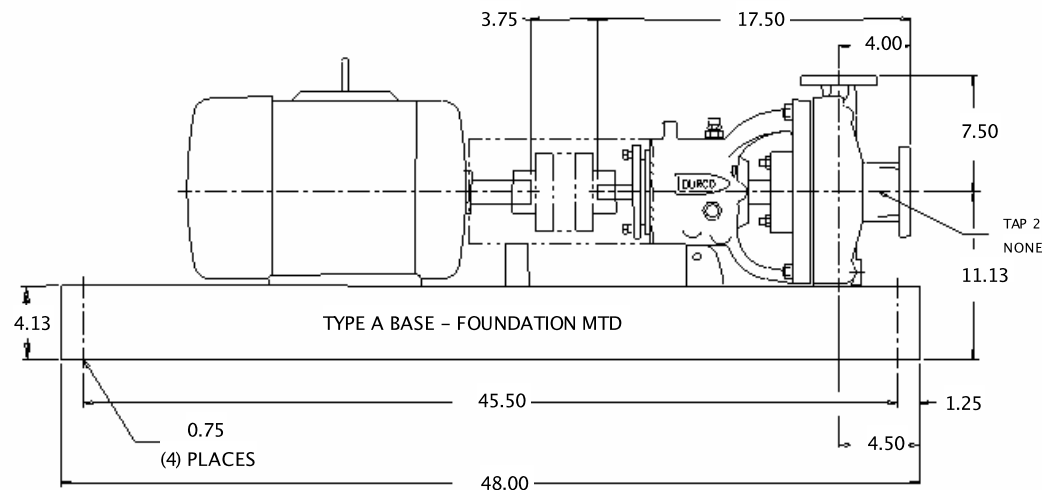
Customer	: Chemetron Railway Prodcuts	Pump size & type	: 1K3x1.5-82RV M3 ST	Drawing number	: -
Item number	:	Pump speed / Stages	: 3500 rpm / 1	Date	: July 19, 2011
Service	:	Flow / Head	: 150.0 USgpm / 200.00 ft	Certified by / Date :	: -
Customer PO #	: -	Driver power / Frame	: 20.0 hp / 14.9 kW / 256T	Seal type	: ISC Pusher
Vendor reference	: 59609 Version 1	Volts / Phase / Hz	: - / 3 / 60.0	Seal flush plan	: None

Dimensions certified for construction when properly endorsed below.
Refer to factory for any "x" dimensions.
DO NOT SCALE DRAWING

NOTES:

1. Consult pump I.O.M. before installing the pump.
2. Installation dimensions are +/- .13" (3mm), unless otherwise noted.
3. Foundation bolts and piping should not be set rigidly before receipt of equipment.
4. Allow a minimum of .75" (19mm) under baseplate for adjustment and grouting.
5. All holes in flanges are offset from centerlines.

6. Piping, foundations, and systems are the responsibility of others. Flowserve Pump Division data and comments are offered as an aid, but Flowserve Pump Division cannot assume responsibility for the system design or operation. It is recommended that a specialist skilled in this area be consulted to ensure a successful installation.
7. Dimension shown from bottom of base to centerline of pump includes any blocks under pump, as necessary.



All dimensions are in inches unless otherwise specified

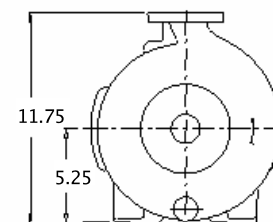
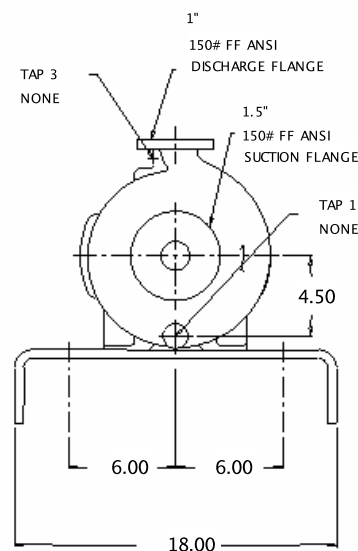
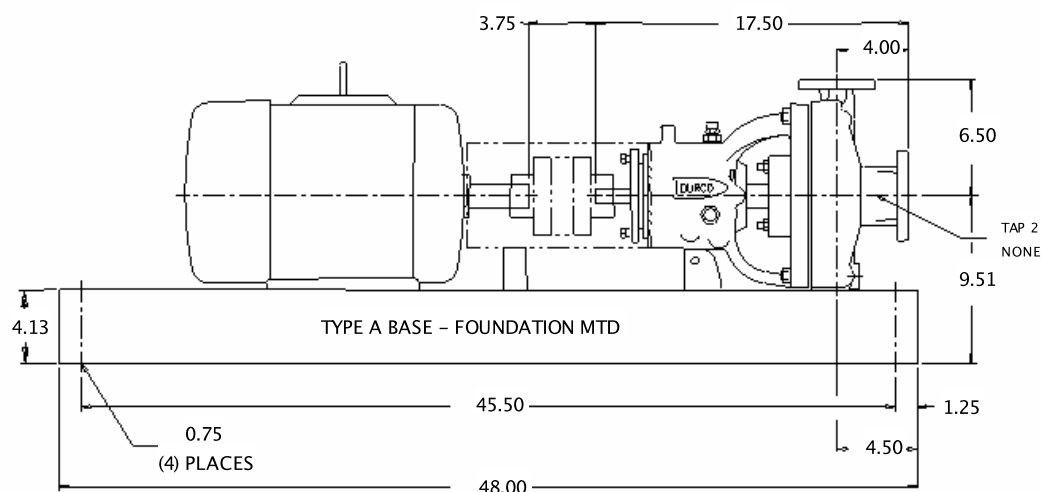
Customer	: Chemetron Railway Prodcuts	Pump size & type	: 1K3x1.5-82RV M3 ST	Drawing number	: -
Item number	:	Pump speed / Stages	: 3500 rpm / 1	Date	: July 19, 2011
Service	:	Flow / Head	: 115.0 USgpm / 159.00 ft	Certified by / Date :	: -
Customer PO #	: -	Driver power / Frame	: 15.0 hp / 11.2 kW / 254T	Seal type	: ISC Pusher
Vendor reference	: 59609 Version 1	Volts / Phase / Hz	: 190 / 3 / 60.0	Seal flush plan	: None

Dimensions certified for construction when properly endorsed below.
Refer to factory for any "x" dimensions.
DO NOT SCALE DRAWING

NOTES:

1. Consult pump I.O.M. before installing the pump.
2. Installation dimensions are +/- .13" (3mm), unless otherwise noted.
3. Foundation bolts and piping should not be set rigidly before receipt of equipment.
4. Allow a minimum of .75" (19mm) under baseplate for adjustment and grouting.
5. All holes in flanges are offset from centerlines.

6. Piping, foundations, and systems are the responsibility of others.
Flowserve Pump Division data and comments are offered as an aid, but Flowserve Pump Division cannot assume responsibility for the system design or operation. It is recommended that a specialist skilled in this area be consulted to ensure a successful installation.
7. Dimension shown from bottom of base to centerline of pump includes any blocks under pump, as necessary.



All dimensions are in inches unless otherwise specified

Customer	: Chemetron Railway Prodcuts	Pump size & type	: 1K1.5x1-82RV M3 ST	Drawing number	: -
Item number	:	Pump speed / Stages	: 3500 rpm / 1	Date	: July 19, 2011
Service	:	Flow / Head	: 115.0 USgpm / 159.00 ft	Certified by / Date :	: -
Customer PO #	: -	Driver power / Frame	: 10.00 hp / 7.46 kW / 215T	Seal type	: ISC Pusher
Vendor reference	: 59609 Version 1	Volts / Phase / Hz	: 190 / 3 / 60.0	Seal flush plan	: None



Pricing Sheet / Scope of supply

Customer: Chemetron Railway Prodcuts
Cust / Proj Ref:
Item Number:
Service:

Pump / Stg: 1K3x1.5-82RV M3 ST/1
Curve Number: MIII7140V
FPD # / Reference: 59609 Version 1 / Chemetron Railway ...
Date: Jul 19, 2011

Qty	Description	Average Unit Price	Extended Price
1	1K3x1.5-82RV M3 ST FPD D4 Pump - Standard Duty Packaging by Chesapeake Safe(non explosive) atmosphere Alloy Surcharge / Chesapeake Flowserve Single Cartridge Seal Flowserve ISC2 Pusher w/o Pumping Ring SilCar Rotary vs. Carbon Seat Viton Elastomers 316SS Metal Parts 316SS Large Bore Gland No Seal Price Adder Required Cover - FML Gland Provided By Seal Manufacturer Casing - 316SS (D4/CF8M) Cover - 316SS (D4/CF-8M) Cover Gasket - TM Impeller - CD4M/CD-4MCu Impeller Gasket - TFR No O-ring required Bearing Housing - DCI2 No Bearing Housing Adapter Required Bearing Housing Foot - CI Shaft - Standard Shaft - ZH Steel w/316SS Butt Weld Stud B7TF / Nut SRTF (Steel-TFE Coated) Casing - Standard 150# FF ANSI Drilling No Casing Drain Tap No Suction Tap No Discharge Tap Plastic Flange Covers ISO 1940 G6.3 Impeller Balance Power End - Mark 3A Oil Lubricated Bearings	USD 4890	USD 4890

Feature quantities match pump quantity unless otherwise noted.

Prices may be subject to exchange rate fluctuations. Proposal is valid for 30 days.

Flowserve Worldwide Terms and Conditions (latest revision) apply unless otherwise specified herein.

Customer:	Chemetron Railway Prodcuts	Pump / Stg:	1K3x1.5-82RV M3 ST/1
Cust / Proj Ref:		Curve Number:	MIII7140V
Item Number:		FPD # / Reference:	59609 Version 1 / Chemetron Railway ...
Service:		Date:	Jul 19, 2011

Qty	Description	Average Unit Price	Extended Price
1	Watchdog Trico Oiler		
	Oiler/Sight on Rgt Side-Viewed From Cplg		
	Oil Seals - TSSR		
	3.5" Coupling Spacer		
	Woods Coupling		
	Sureflex Type SC7		
	EPDM Spacer		
	Type A - Foundation Baseplate		
	148 Baseplate		
	Steel - Baseplate		
	Polybloc - Driver Mounting		
	Steel - Fasteners		
	Std. Steel Cplg Guard (Safety Yellow)		
	10 Min Non-Wit Hydro Test-Csg & Cvr Only		
	Paint - Plant Standard		
	Paint - Entire Pump & Base, Less Casing		
	Paint Over Standard Flowserve Primer		
	One Coat of Paint (4-6 mils DFT)		
	No Customer Inspection		
	No PMI Testing		
	No 2.1 Certificate of Compliance		
	No 2.2 Cert of Compliance		
	No 3.1 CMTRs		
	No Radiography / X-Ray		
	No Dye Penetrant of 100% Machined Surf.		
	No Dye Penetrant of Gasketed Surfaces		
	Standard Domestic Packaging (6 Months)		
	No Documentation Required		
	Nameplate w/US Customary Units		
	Driver		
	Driver Mounted to Base by Factory		
	Driver provided by Others		

Total:	USD 4890	USD 4890
--------	----------	----------

Customer Comments

Shipment (after receipt of order and full release to manufacture) is 8.0 working weeks.

Feature quantities match pump quantity unless otherwise noted.

Prices may be subject to exchange rate fluctuations. Proposal is valid for 30 days.

Flowserve Worldwide Terms and Conditions (latest revision) apply unless otherwise specified herein.



Pricing Sheet / Scope of supply

Customer: Chemetron Railway Prodcuts
Cust / Proj Ref:
Item Number:
Service:

Pump / Stg: 1K3x1.5-82RV M3 ST/1
Curve Number: MIII7140V
FPD # / Reference: 59609 Version 1 / Chemetron Railway ...
Date: Jul 19, 2011

Qty	Description	Average Unit Price	Extended Price
1	1K3x1.5-82RV M3 ST FPD D4 Pump - Standard Duty Packaging by Chesapeake Safe(non explosive) atmosphere Alloy Surcharge / Chesapeake Flowserve Single Cartridge Seal Flowserve ISC2 Pusher w/o Pumping Ring SilCar Rotary vs. Carbon Seat Viton Elastomers 316SS Metal Parts 316SS Large Bore Gland No Seal Price Adder Required Cover - FML Gland Provided By Seal Manufacturer Casing - 316SS (D4/CF8M) Cover - 316SS (D4/CF-8M) Cover Gasket - TM Impeller - CD4M/CD-4MCu Impeller Gasket - TFR No O-ring required Bearing Housing - DCI2 No Bearing Housing Adapter Required Bearing Housing Foot - CI Shaft - Standard Shaft - ZH Steel w/316SS Butt Weld Stud B7TF / Nut SRTF (Steel-TFE Coated) Casing - Standard 150# FF ANSI Drilling No Casing Drain Tap No Suction Tap No Discharge Tap Plastic Flange Covers ISO 1940 G6.3 Impeller Balance Power End - Mark 3A Oil Lubricated Bearings	USD 4890	USD 4890

Feature quantities match pump quantity unless otherwise noted.

Prices may be subject to exchange rate fluctuations. Proposal is valid for 30 days.

Flowserve Worldwide Terms and Conditions (latest revision) apply unless otherwise specified herein.

Customer:	Chemetron Railway Prodcuts	Pump / Stg:	1K3x1.5-82RV M3 ST/1
Cust / Proj Ref:		Curve Number:	MIII7140V
Item Number:		FPD # / Reference:	59609 Version 1 / Chemetron Railway ...
Service:		Date:	Jul 19, 2011

Qty	Description	Average Unit Price	Extended Price
1	Watchdog Trico Oiler		
	Oiler/Sight on Rgt Side-Viewed From Cplg		
	Oil Seals - TSSR		
	3.5" Coupling Spacer		
	Woods Coupling		
	Sureflex Type SC7		
	EPDM Spacer		
	Type A - Foundation Baseplate		
	148 Baseplate		
	Steel - Baseplate		
	Polybloc - Driver Mounting		
	Steel - Fasteners		
	Std. Steel Cplg Guard (Safety Yellow)		
	10 Min Non-Wit Hydro Test-Csg & Cvr Only		
	Paint - Plant Standard		
	Paint - Entire Pump & Base, Less Casing		
	Paint Over Standard Flowserve Primer		
	One Coat of Paint (4-6 mils DFT)		
	No Customer Inspection		
	No PMI Testing		
	No 2.1 Certificate of Compliance		
	No 2.2 Cert of Compliance		
	No 3.1 CMTRs		
	No Radiography / X-Ray		
	No Dye Penetrant of 100% Machined Surf.		
	No Dye Penetrant of Gasketed Surfaces		
	Standard Domestic Packaging (6 Months)		
	No Documentation Required		
	Nameplate w/US Customary Units		
	Driver		
	Driver Mounted to Base by Factory		
	Driver provided by Others		

Total:	USD 4890	USD 4890
--------	----------	----------

Customer Comments

Shipment (after receipt of order and full release to manufacture) is 8.0 working weeks.

Feature quantities match pump quantity unless otherwise noted.

Prices may be subject to exchange rate fluctuations. Proposal is valid for 30 days.

Flowserve Worldwide Terms and Conditions (latest revision) apply unless otherwise specified herein.



Pricing Sheet / Scope of supply

Customer: Chemetron Railway Prodcuts
Cust / Proj Ref:
Item Number:
Service:

Pump / Stg: 1K1.5x1-82RV M3 ST/1
Curve Number: MIII7040AV
FPD # / Reference: 59609 Version 1 / Chemetron Railway ...
Date: Jul 19, 2011

Qty	Description	Average Unit Price	Extended Price
1	1K1.5x1-82RV M3 ST FPD D4 Pump - Standard Duty Packaging by Chesapeake Safe(non explosive) atmosphere Alloy Surcharge / Chesapeake Flowserve Single Cartridge Seal Flowserve ISC2 Pusher w/o Pumping Ring SilCar Rotary vs. Carbon Seat Viton Elastomers 316SS Metal Parts 316SS Large Bore Gland No Seal Price Adder Required Cover - FML Gland Provided By Seal Manufacturer Casing - 316SS (D4/CF8M) Cover - 316SS (D4/CF-8M) Cover Gasket - TM Impeller - CD4M/CD-4MCu Impeller Gasket - TFR No O-ring required Bearing Housing - DCI2 No Bearing Housing Adapter Required Bearing Housing Foot - CI Shaft - Standard Shaft - ZH Steel w/316SS Butt Weld Stud B7TF / Nut SRTF (Steel-TFE Coated) Casing - Standard 150# FF ANSI Drilling No Casing Drain Tap No Suction Tap No Discharge Tap Plastic Flange Covers ISO 1940 G6.3 Impeller Balance Power End - Mark 3A Oil Lubricated Bearings	USD 4495	USD 4495

Feature quantities match pump quantity unless otherwise noted.

Prices may be subject to exchange rate fluctuations. Proposal is valid for 30 days.

Flowserve Worldwide Terms and Conditions (latest revision) apply unless otherwise specified herein.

Customer:	Chemetron Railway Prodcuts	Pump / Stg:	1K1.5x1-82RV M3 ST/1
Cust / Proj Ref:		Curve Number:	MIII7040AV
Item Number:		FPD # / Reference:	59609 Version 1 / Chemetron Railway ...
Service:		Date:	Jul 19, 2011

Qty	Description	Average Unit Price	Extended Price
1	Watchdog Trico Oiler		
	Oiler/Sight on Rgt Side-Viewed From Cplg		
	Oil Seals - TSSR		
	3.5" Coupling Spacer		
	Woods Coupling		
	Sureflex Type SC7		
	EPDM Spacer		
	Type A - Foundation Baseplate		
	148 Baseplate		
	Steel - Baseplate		
	Polybloc - Driver Mounting		
	Steel - Fasteners		
	Std. Steel Cplg Guard (Safety Yellow)		
	10 Min Non-Wit Hydro Test-Csg & Cvr Only		
	Paint - Plant Standard		
	Paint - Entire Pump & Base, Less Casing		
	Paint Over Standard Flowserve Primer		
	One Coat of Paint (4-6 mils DFT)		
	No Customer Inspection		
	No PMI Testing		
	No 2.1 Certificate of Compliance		
	No 2.2 Cert of Compliance		
	No 3.1 CMTRs		
	No Radiography / X-Ray		
	No Dye Penetrant of 100% Machined Surf.		
	No Dye Penetrant of Gasketed Surfaces		
	Standard Domestic Packaging (6 Months)		
	No Documentation Required		
	Nameplate w/US Customary Units		
	Driver		
	Driver Mounted to Base by Factory		
	Driver provided by Others		

Total:	USD 4495	USD 4495
--------	----------	----------

Customer Comments

Shipment (after receipt of order and full release to manufacture) is 8.0 working weeks.

Feature quantities match pump quantity unless otherwise noted.

Prices may be subject to exchange rate fluctuations. Proposal is valid for 30 days.

Flowserve Worldwide Terms and Conditions (latest revision) apply unless otherwise specified herein.